



11:20 am

Vaccination delivery into nursing homes: opportunities and challenges

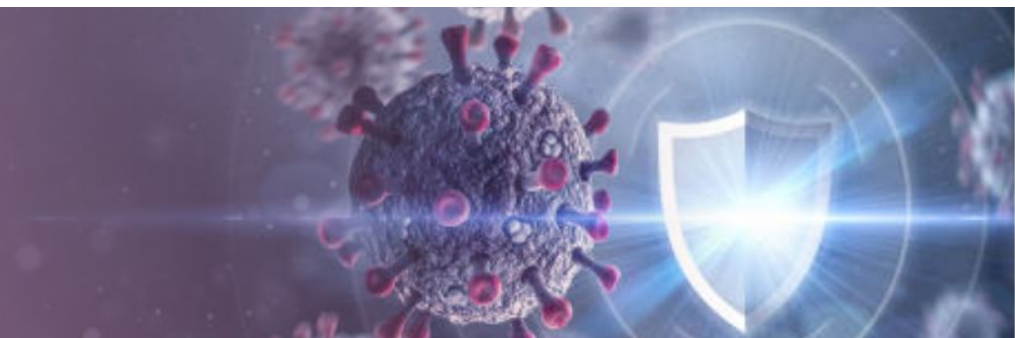
A/Prof Michael Murray AM

Divisional Medical Director, Director Geriatric Medicine, Austin Health

Chairperson National Ageing Research Institute (NARI)

Board Director BENETAS, Lynden Aged Care Association

No declarations



Outline

Current situation

Severe Acute Respiratory Infection (SARI)

Impact on Resident, Aged Care Homes (RACH), wider health system, Staff

Vaccination

Vaccination

update to AIR

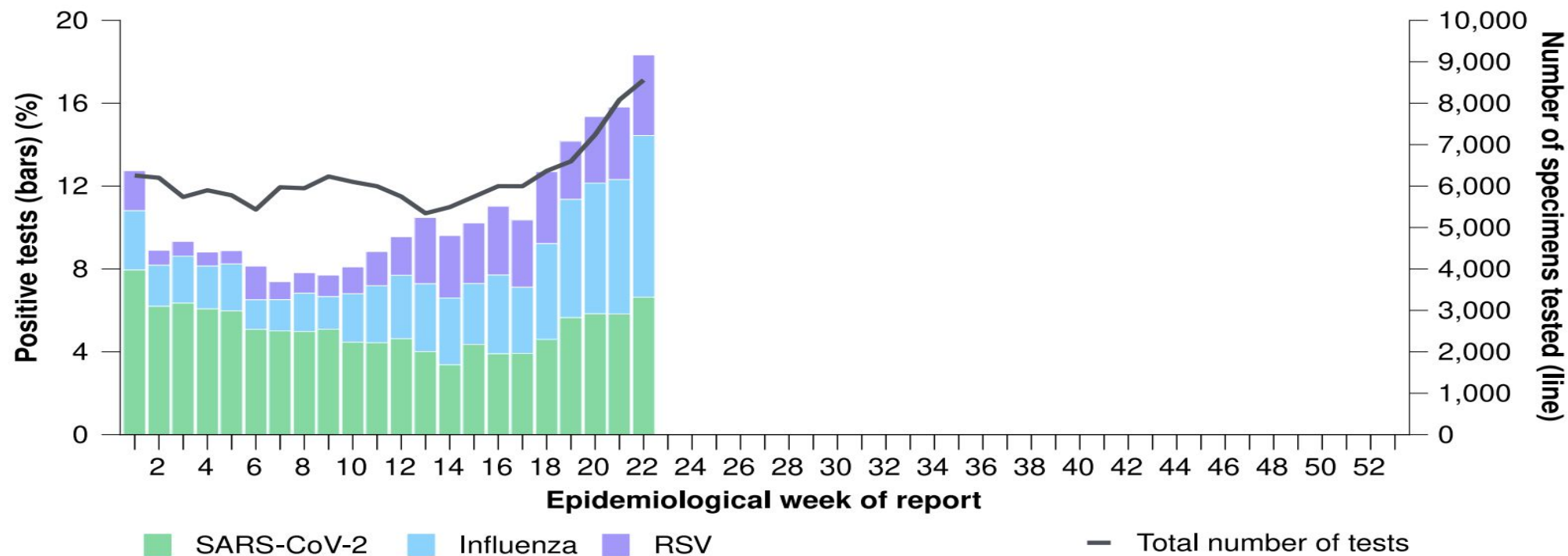
vaccination assistance and support

role for acute health and admission screening

Influenza and other acute viral respiratory infections

Increasing rates of positive samples for Influenza tested at sentinel laboratories 5.8% rising to 6.2% in last 2 reported fortnights (RSV 3.0% rising to 3.7%)

Figure 5: Total number of specimens tested by sentinel laboratories and proportion of positive sentinel laboratory tests by pathogen and week of report*†, 1 January to 2 June 2024





Current COVID-19 situation in aged care

Significant increase in cases Covid 19 from Mid-April



Notes: (i) Residential aged care case data as at 5 Jun 2024
(ii) The large increase in outbreaks on 16 January 2022 is driven by a reporting lag.





COVID-19 outbreaks in residential aged care

5 June 2024, there are:

499 active COVID-19 outbreaks in residential aged care

3,051 active resident COVID-19 cases, 1,362 active staff COVID-19 cases

Resident deaths Cumulative (6,629) 7-day increase (49)

	ACT	NSW	NT	QLD	SA	TAS	VIC	WA	Total
Total RACHs with outbreaks	5	155	2	57	60	12	158	50	499
Total number of active resident cases	51	982	6	316	378	62	977	279	3,051
Total number of active staff cases	22	456	3	151	210	45	328	147	1,362
Total outbreaks opened in previous 7 days	7	83	1	25	27	3	57	15	218
Total outbreaks closed in previous 7 days	1	42	0	18	21	1	60	26	169

Patients with COVID-19 accounted for more than half of the severe acute respiratory infection (SARI) admissions at sentinel intensive care surveillance sites

Nationally, age-specific mortality rates for COVID-19, influenza and RSV cases have been highest among those aged 70 years or over.

- age strongest risk factor for Covid-19

- severe illness, functional decline / worsening frailty / death

Admission to acute care or diversion services (Outreach/InReach, better@home type, GEDI)

Tip of the iceberg, with steep increase in ICU staff unavailable due to Covid-19 illness or exposure

Jurisdiction	Received booster in last 6 months	
	Residents vaccinated	% of residents vaccinated
National	76.7k	41.6%
ACT	1.2k	52.1%
NSW	23.6k	39.8%
NT	<200	25.2%
QLD	15.5k	41.4%
SA	7.2k	45.0%
TAS	2.3k	51.8%
VIC	20.8k	43.6%
WA	6.1k	36.0%



Supporting access to COVID vaccinations

Enhanced COVID-19 Vaccination Report (AIR042A) Covid-19 and Influenza vaccination

[AIRM12- AIR042A COVID-19 Vaccination Report \(servicesaustralia.gov.au\)](https://servicesaustralia.gov.au/AIRM12-AIR042A-COVID-19-Vaccination-Report)

Free COVID-19 vaccines are available for everyone in Australia

Incentive payments are provided for doctors and pharmacists to vaccinate aged care residents and housebound

Primary Health Networks can implement local initiatives to assist with access to COVID-19 vaccinations.

Vaccine Administration Partners Program (gaps in primary care vaccination services)



Support to residential aged care homes

Direct Calling of RACH

The Department of Health and Aged Care direct calling aged care homes with low vaccinations rates

Primary Health Networks contacted aged care homes re 2024 vaccination advice.

The Department and PHNs provide direct assistance to homes where needed

Contact PHNs or racfvaccineclinics@health.gov.au for assistance with aged care vaccinations

Vaccination before you discharge type programs

Acute health actively enabling vaccination prior to transfer to RACH

Consent and its challenges





Q&A

Vaccination delivery into nursing homes:
opportunities and challenges

A/Prof Michael Murray AM

